



Industrial Doors



## Product datasheet

Alcove-mounted curtain-type dock shelter

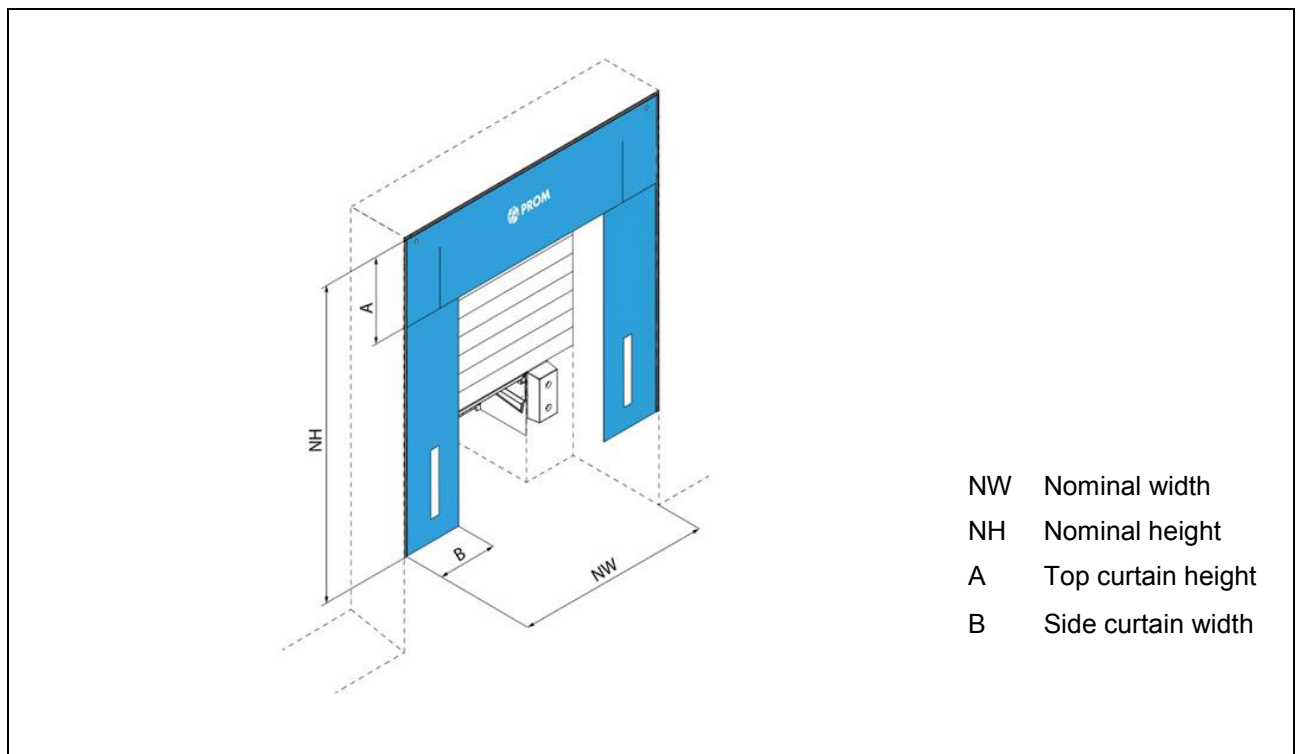
Type: PMN

## Alcove-mounted curtain-type dock shelter

The curtain-type dock shelter for alcove installation type PMN is fixed directly in a building alcove as not to disturb the continuity of the building façade and to considerably improve its overall uniform appearance.

This type of dock shelter consists of aluminum profiles which are mounted to both sides and to the top edge of the alcove. The shelter can be set in concrete, steel or installed using a special fixing system. The high-durability, 3 mm thick curtains are made of 2-layer, PVC-coated fabrics. Warning stripes at the front section of the dock shelter facilitate the vehicle dock-in procedure. The PMN dock shelter is pre-mounted and consists of just three parts; therefore, it can be mounted to the façade very fast and easily. Considerable savings regarding time and money are the decisive advantages of this design.

Already in its standard version, the PMN dock shelter comes with one corner slit so that perfect adjustment to the vehicle can be guaranteed.



	Standard dimensions	Option: special dimensions
NW	3250, 3300, 3400, 3450	3200 - 3600
NH	3200, 3400, 3500, 3600	3200 - 4700
A	1000	1000, 1200, 1500
B	600 ( $\leq$ NW 3400) 700 ( $>$ NW 3400)	600 ( $\leq$ NW 3400) 700 ( $>$ NW 3400)
All dimensions in mm.		

## Curtain specification

Top curtain and side curtain characteristics:

double-layer PVC-coated polyester cloth

total weight: about 3800 g/m<sup>2</sup> in accordance with the EN ISO 2286-2 standard

material thickness: 3 mm

temperature stability: -25° C/ +70° C

low flammability in accordance with the DIN 75200 standard

tensile strength / maximum tensile force in accordance with DIN EN ISO 1421/V1

longitudinal tensile strength: about 7000 N/ 50 mm

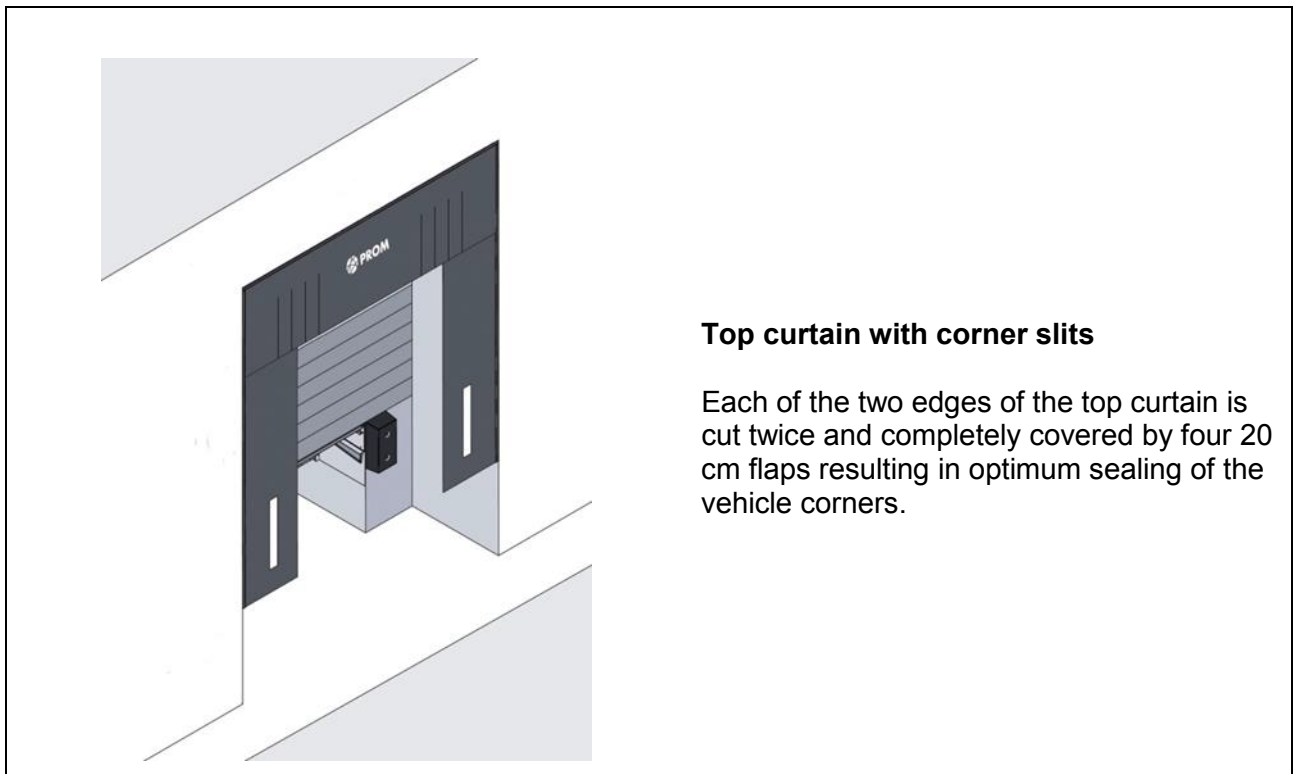
transverse tensile strength: about 4300 N/ 50 mm

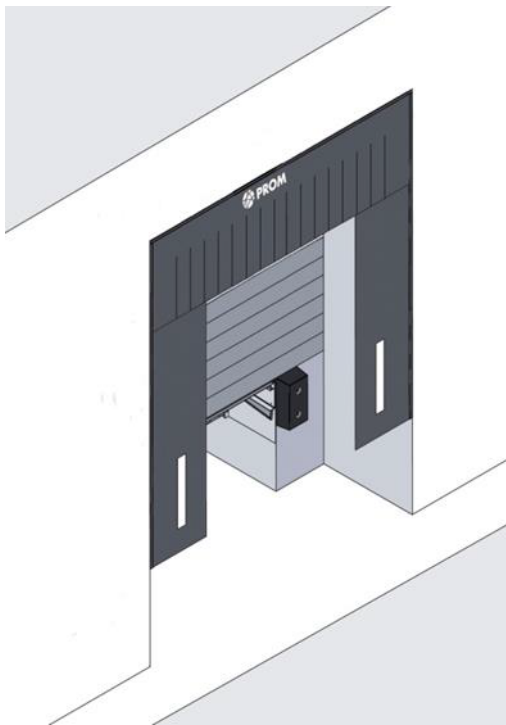
tear propagation strength in accordance with DIN 53363

longitudinal tear propagation strength: about 1000 N

transverse tear propagation strength: about 900 N

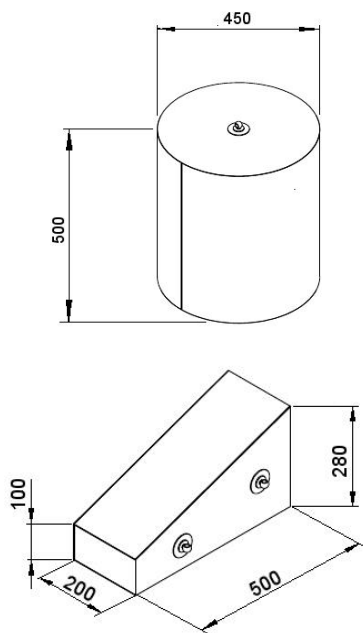
## Options





### Slit top curtain

The top curtain is reinforced by means of cloth inlays. The sealing effect is optimized thanks to the completely overlapping laterally staggered flaps.



### Sealing devices

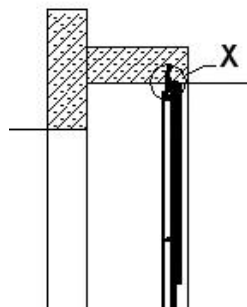
The corner seals and bumpers are coated with high-resistant PVC material and guarantee perfect protection against draught during loading and unloading.

Number on the top curtain

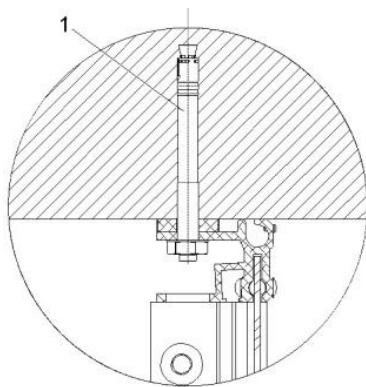
Yellow warning stripes

Reinforcement of the side curtains by rubber flaps (1x per side)

## Wall fixing Detail „X“

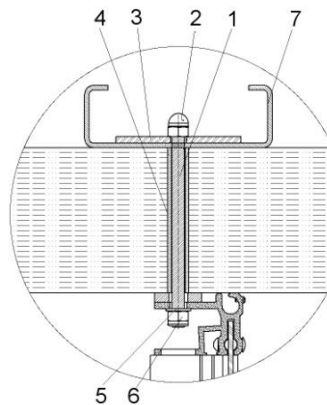


**Concrete wall**



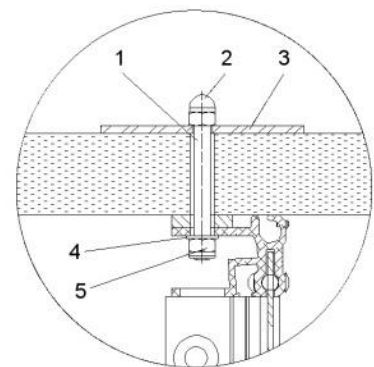
- 1 Fixing angle

**Insulated wall**



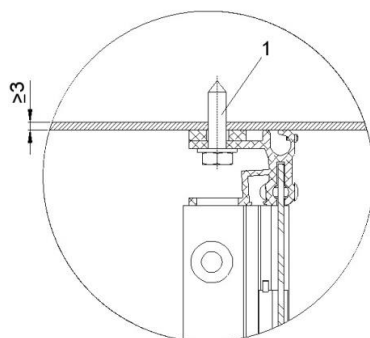
- 1 Threaded bolt  
2 nut  
3 washer  
4 spacer  
5 washer  
6 nut  
7 Installation profile e.g.:  
C-profile 120x40x15x3\*

**Aerated autoclaved concrete wall**



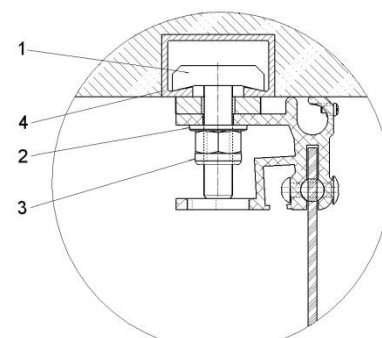
- 1 Threaded bolt  
2 nut  
3 washer  
4 washer  
5 nut

**Steel wall thickness  $\geq 3$  mm**



- 1 Self-tapping screw

**Steel profile**



- 1 HALFEN bolts HSR M10x40  
2 washer  
3 nut  
4 HALFEN channels\* HTA 40/22

\*) By others, not included in the PROMStahl delivery scope